

Les Pages du laa, Hors série 1

Folding (Aspelare, Belgium)

Stijn Ank (support : Marc Belderbos)

Janvier 2010

Comité de rédaction :

**Marc Belderbos
Cécile Chanvillard
Pierre Cloquette
Renaud Pleitinx
Jean Stillemans**

Diffusion :

laa

**laboratoire analyse architecture
Faculté d'architecture, d'ingénierie architecturale, d'urbanisme
Place du Levant 1 boîte L5.05.02
1348 Louvain-la-Neuve
Belgique**

<https://uclouvain.be/fr/instituts-recherche/lab/laalaa>

**© Les Pages du laa
ISSN : 2593-2411**

“FOLDING”

(Aspelare, Belgium)

Stijn Ank (support : Marc Belderbos)



CONCEPTING

READING THE “FOLDED” LANDSCAPE :

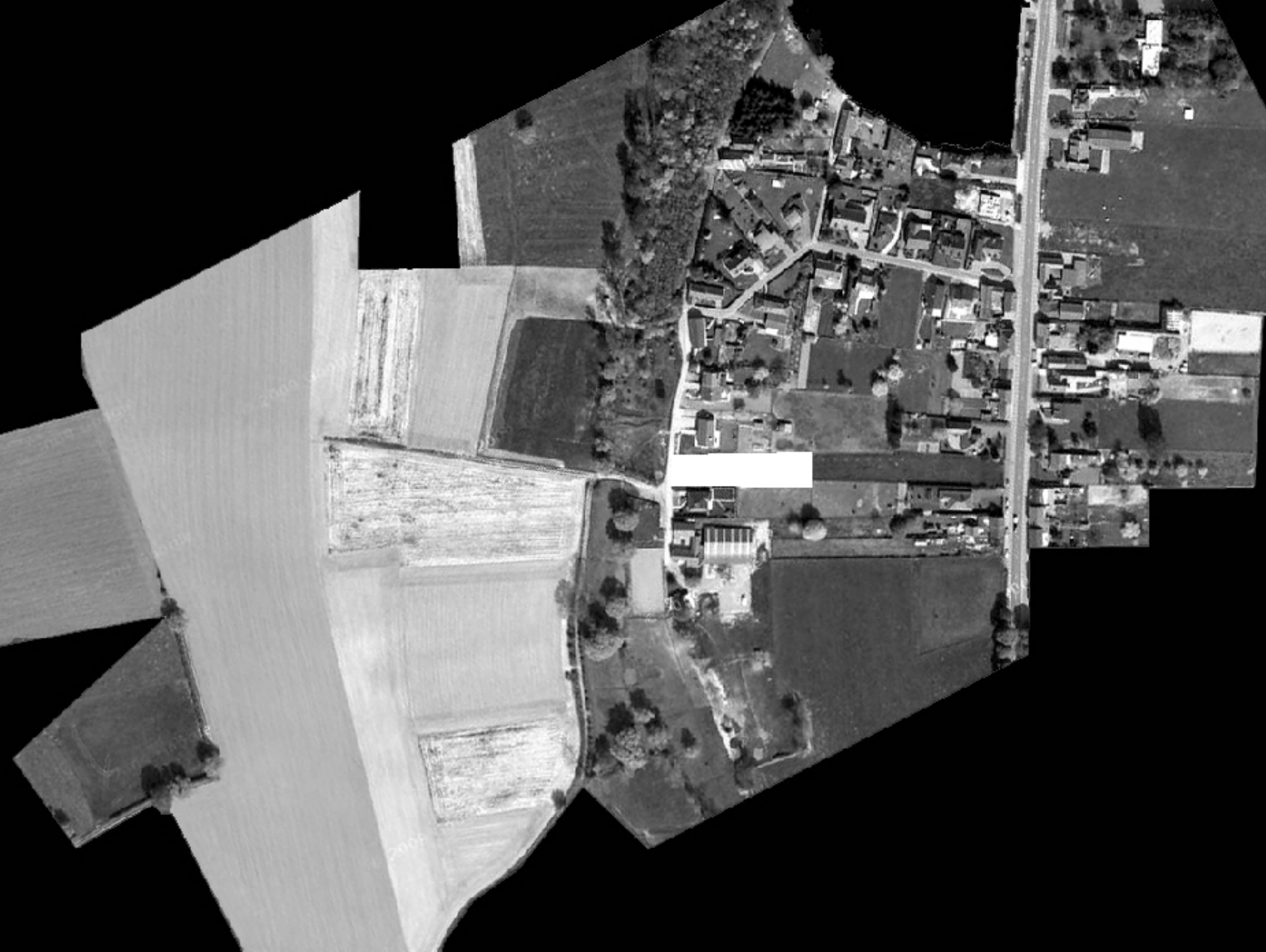
- STRUCTURE OF THE LANDSCAPE
- ORIENTATION OF THE LANDSCAPE
- TOPOGRAPHY OF THE LANDSCAPE

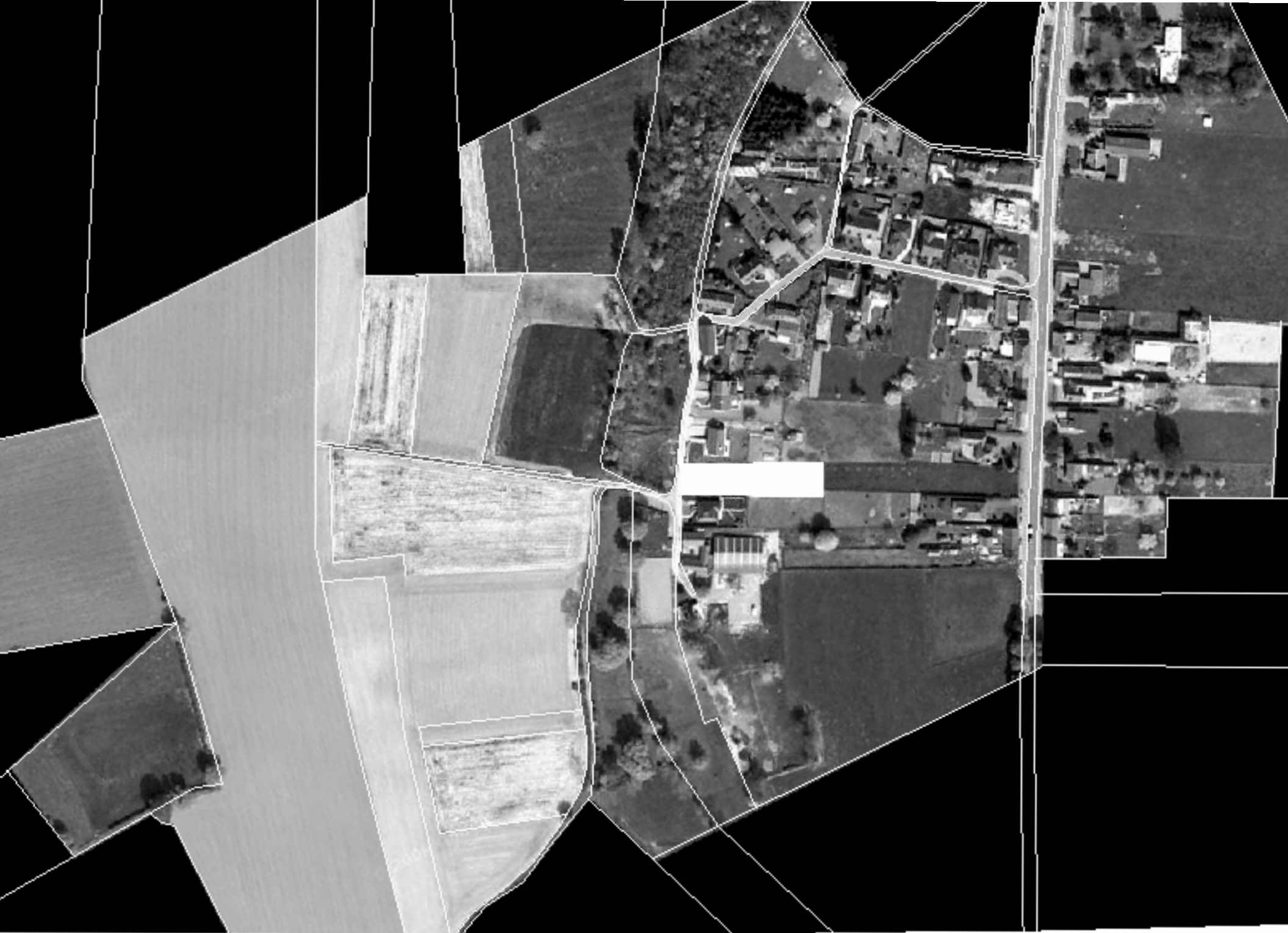
FOLDED~FOLDING

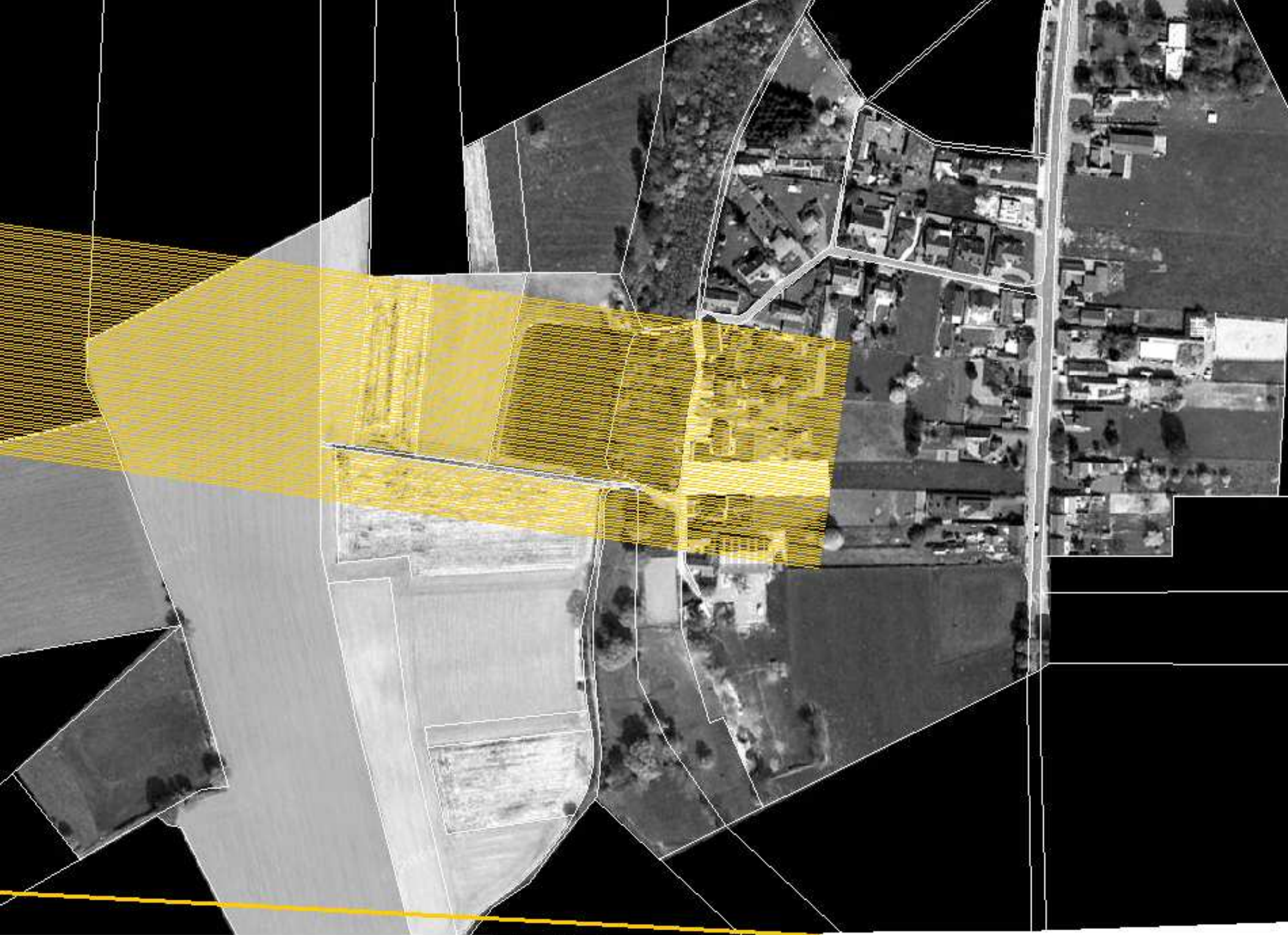
*Think about a paper that you fold...you create **VOIDS** immediately
I could also say “Reading the Voids in the Folded Landscape”
and “Folding Voids in the Readed Landscape”*

FOLDING THE “READED” LANDSCAPE:

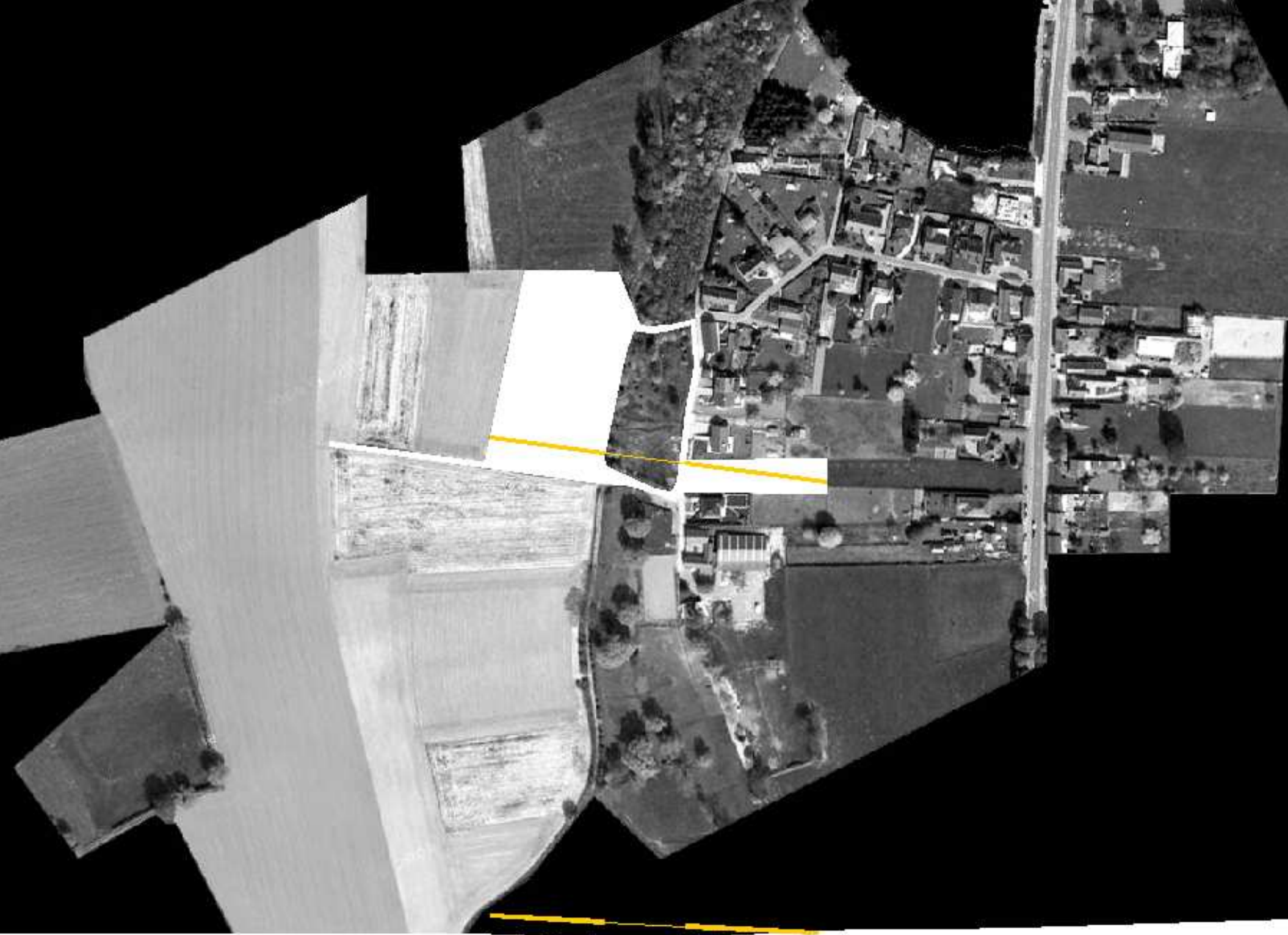
- IN THE STRUCTURE OF THE LANDSCAPE
- IN THE ORIENTATION OF THE LANDSCAPE
- IN THE TOPOGRAPHY OF THE LANDSCAPE



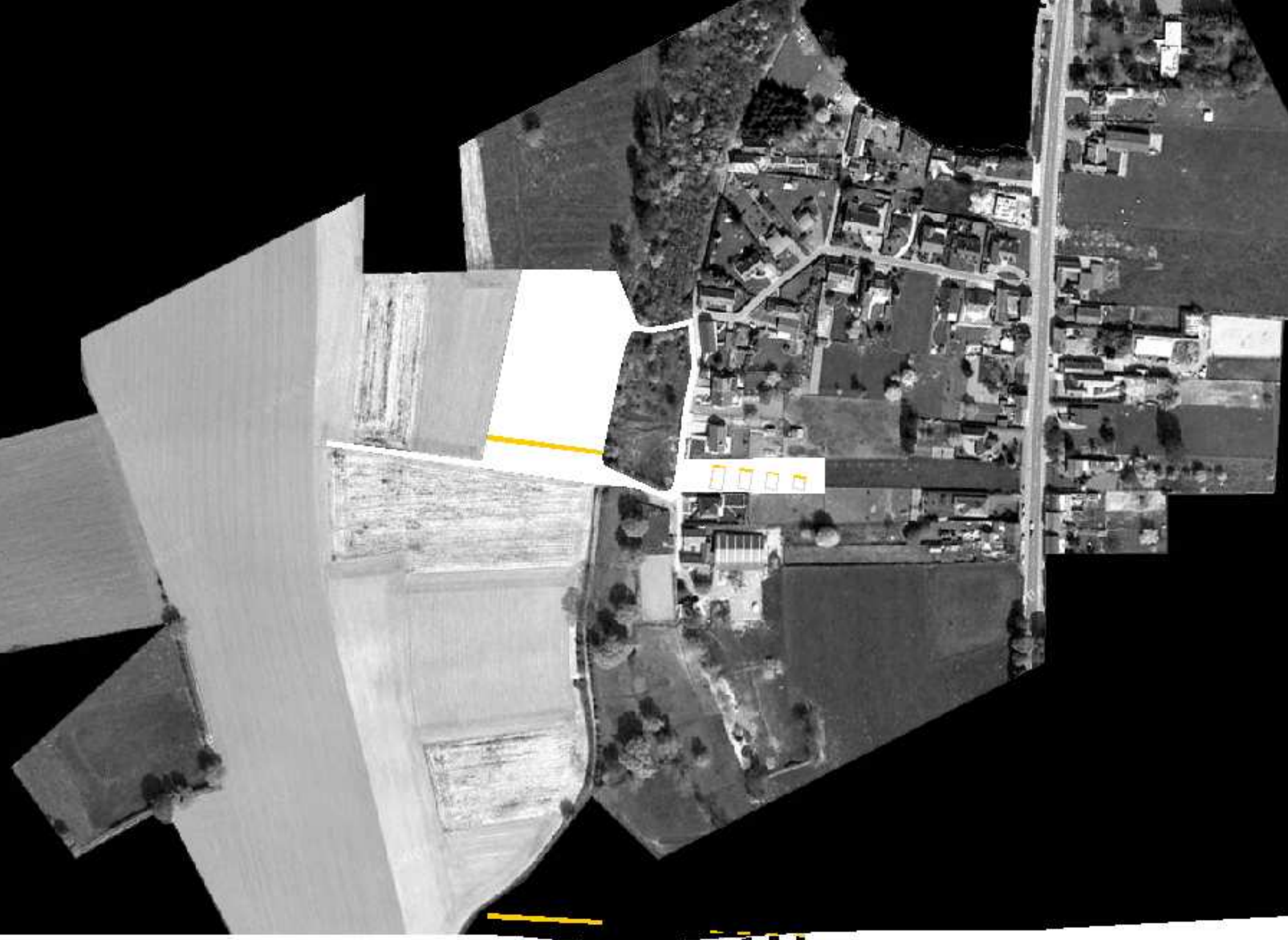


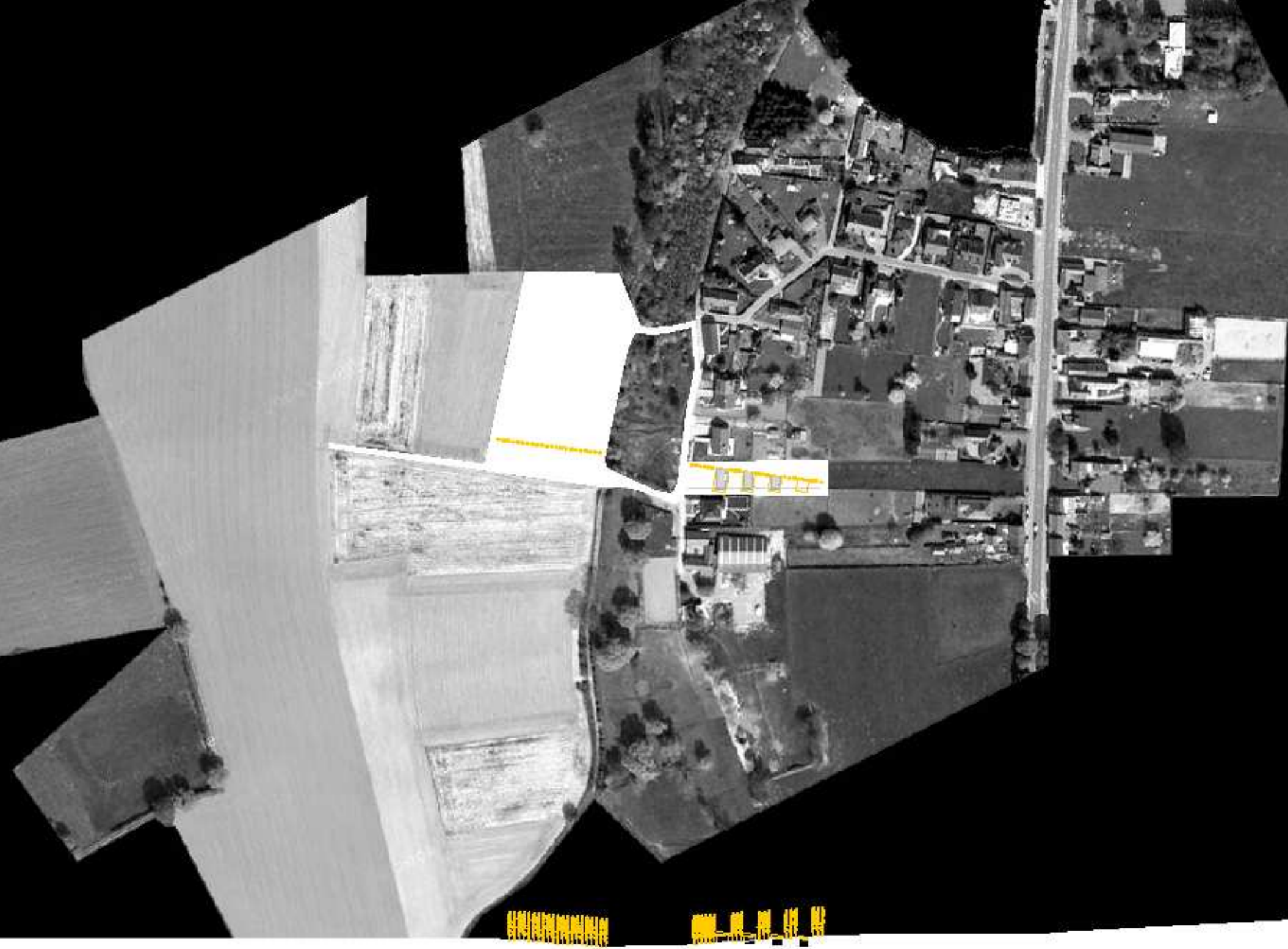


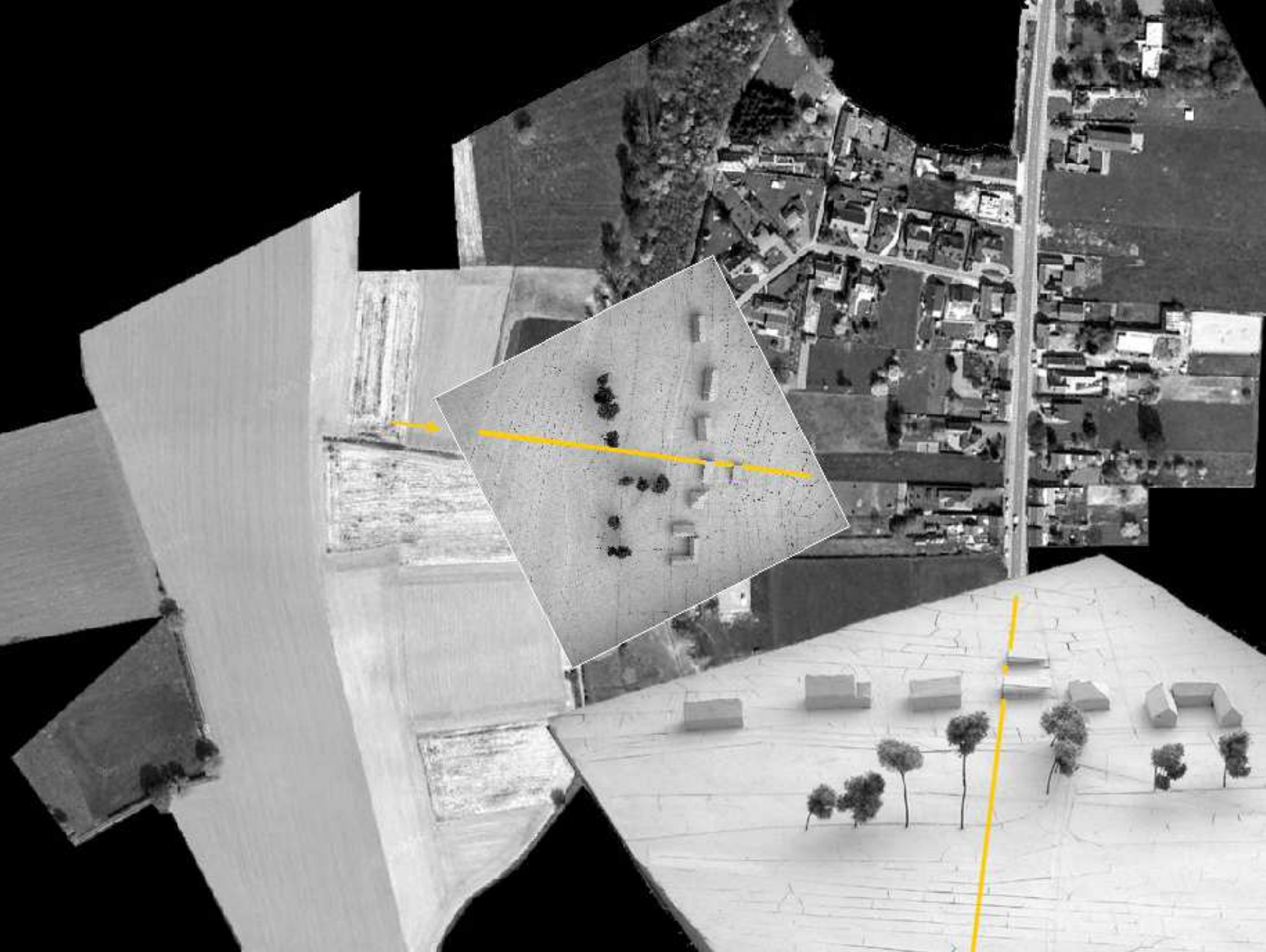


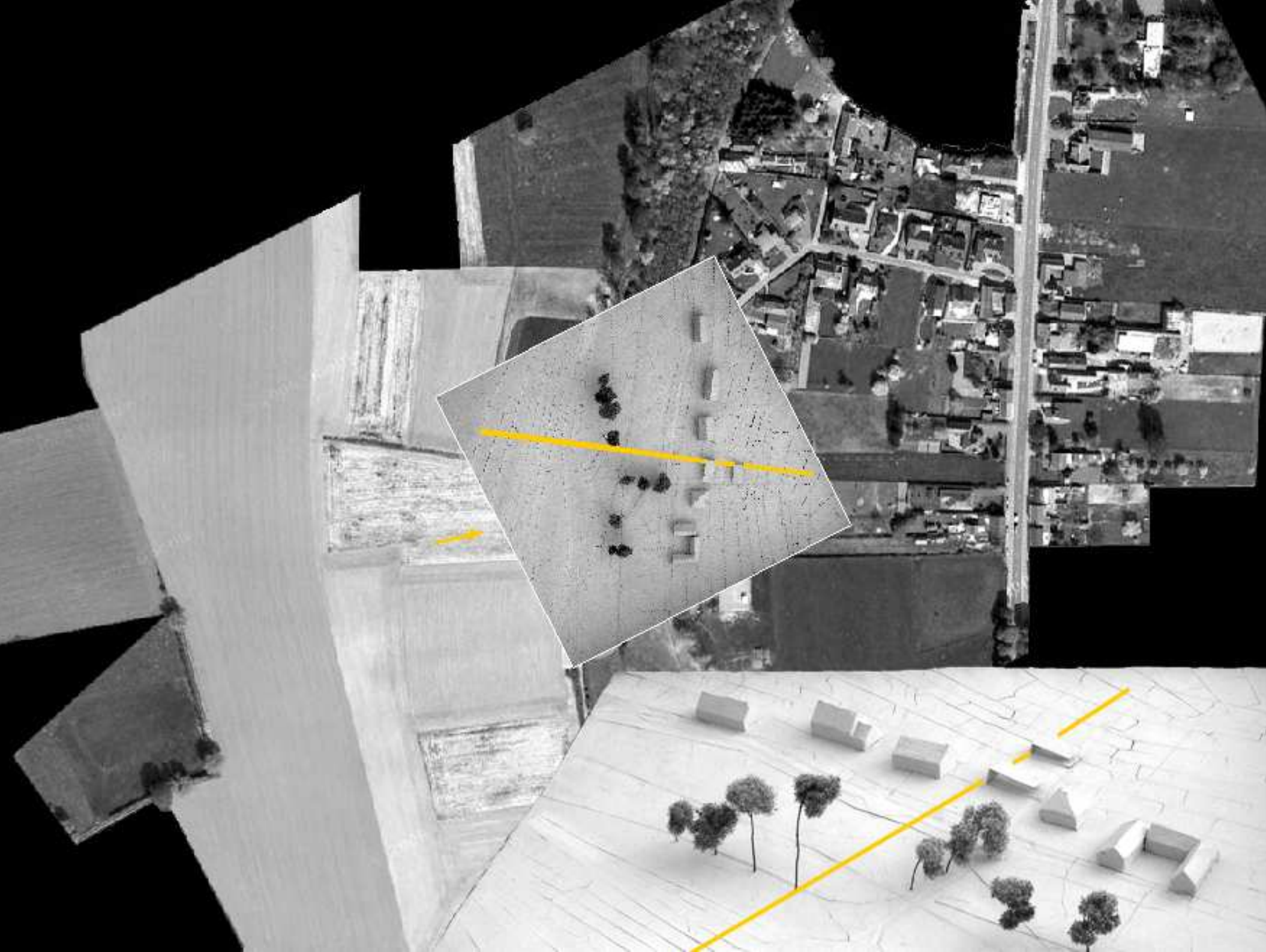


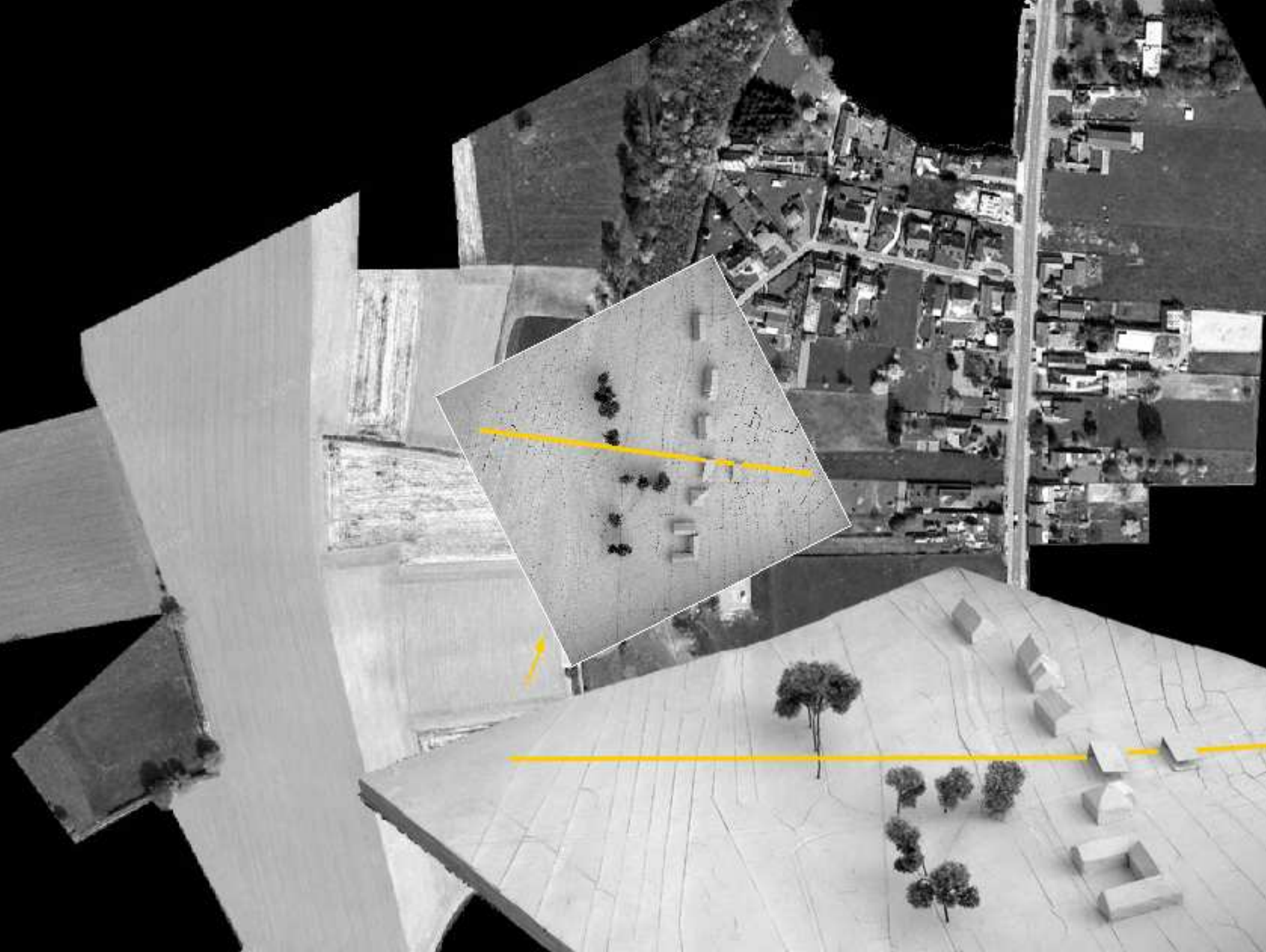


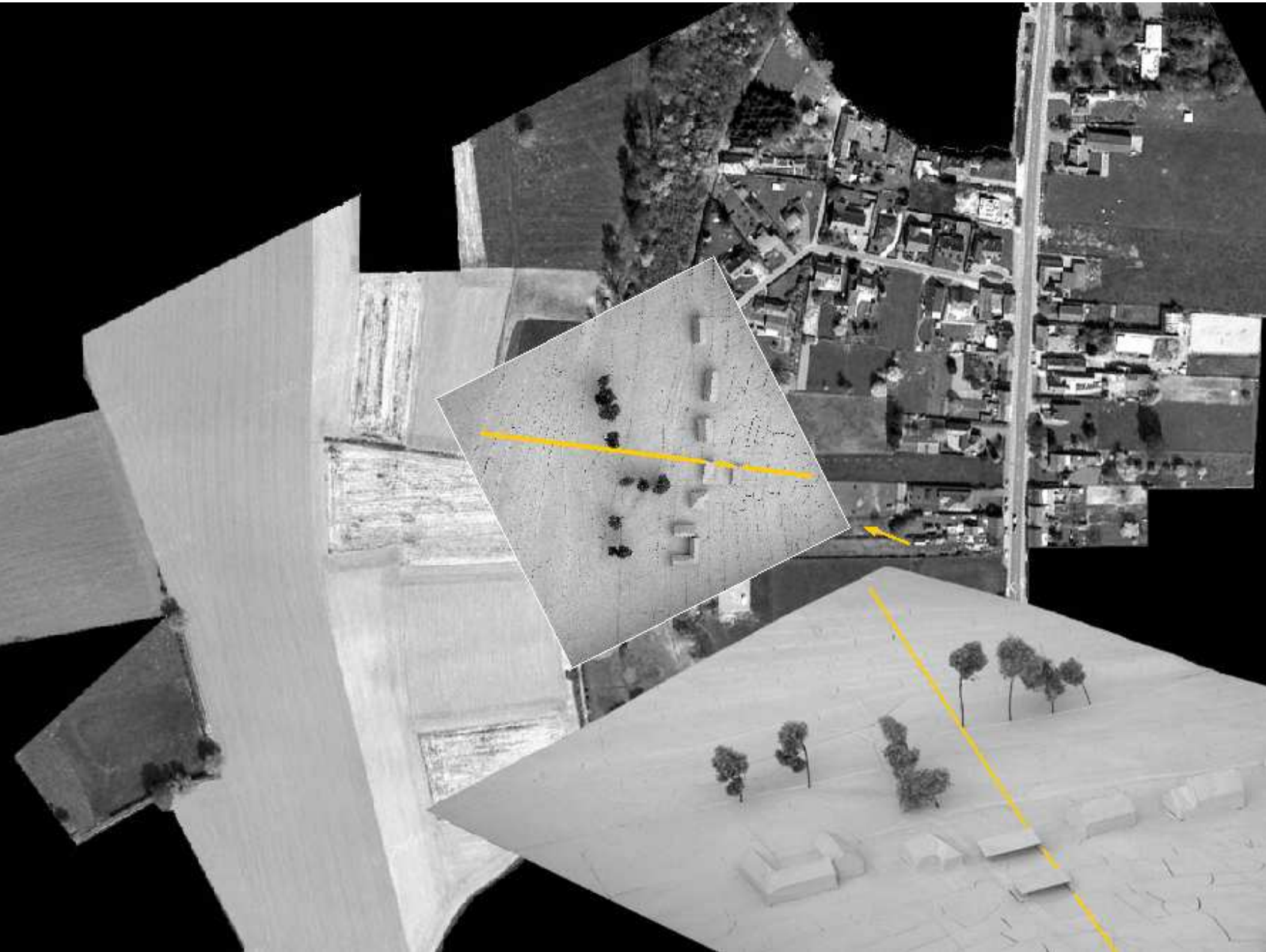


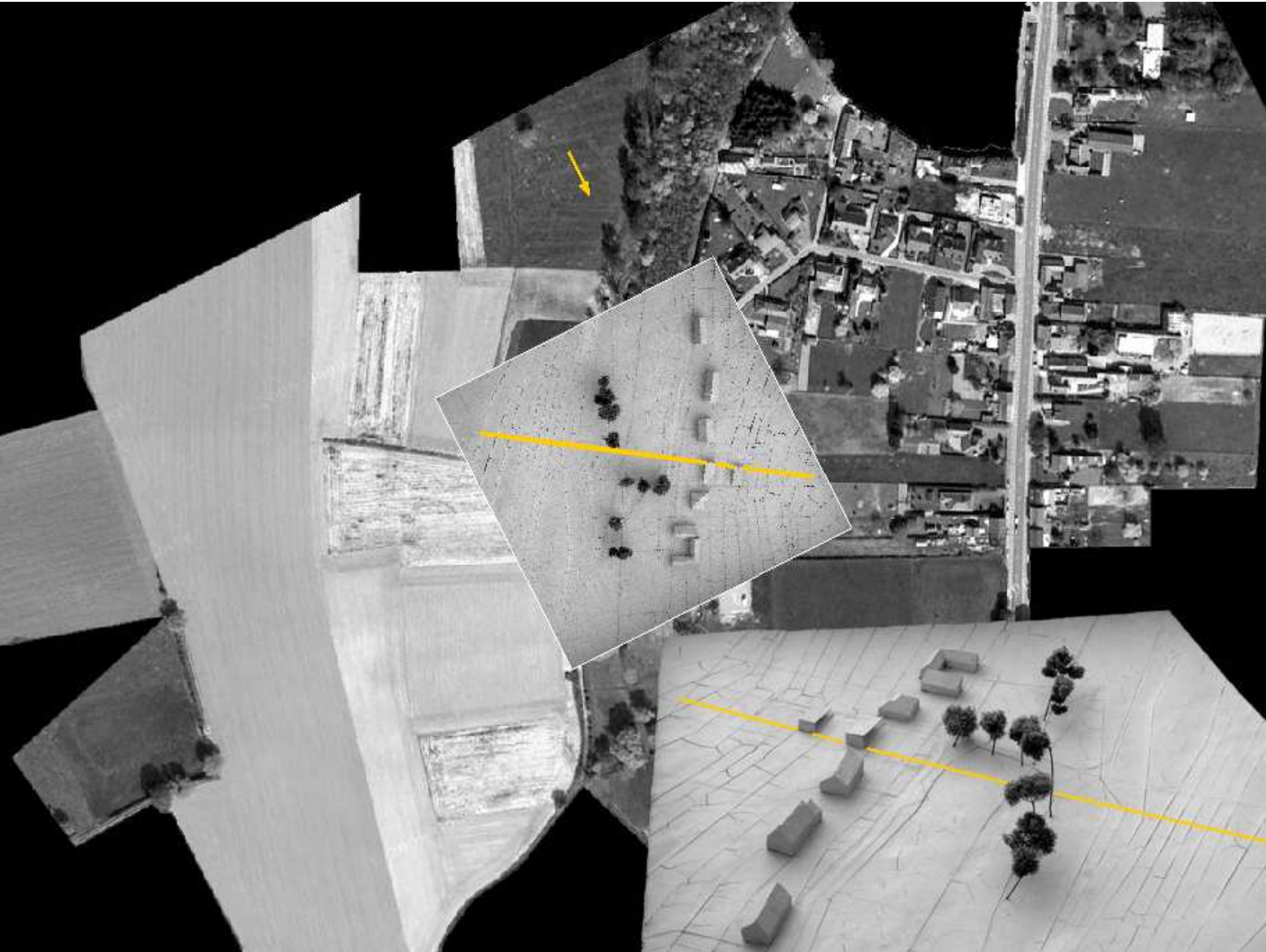


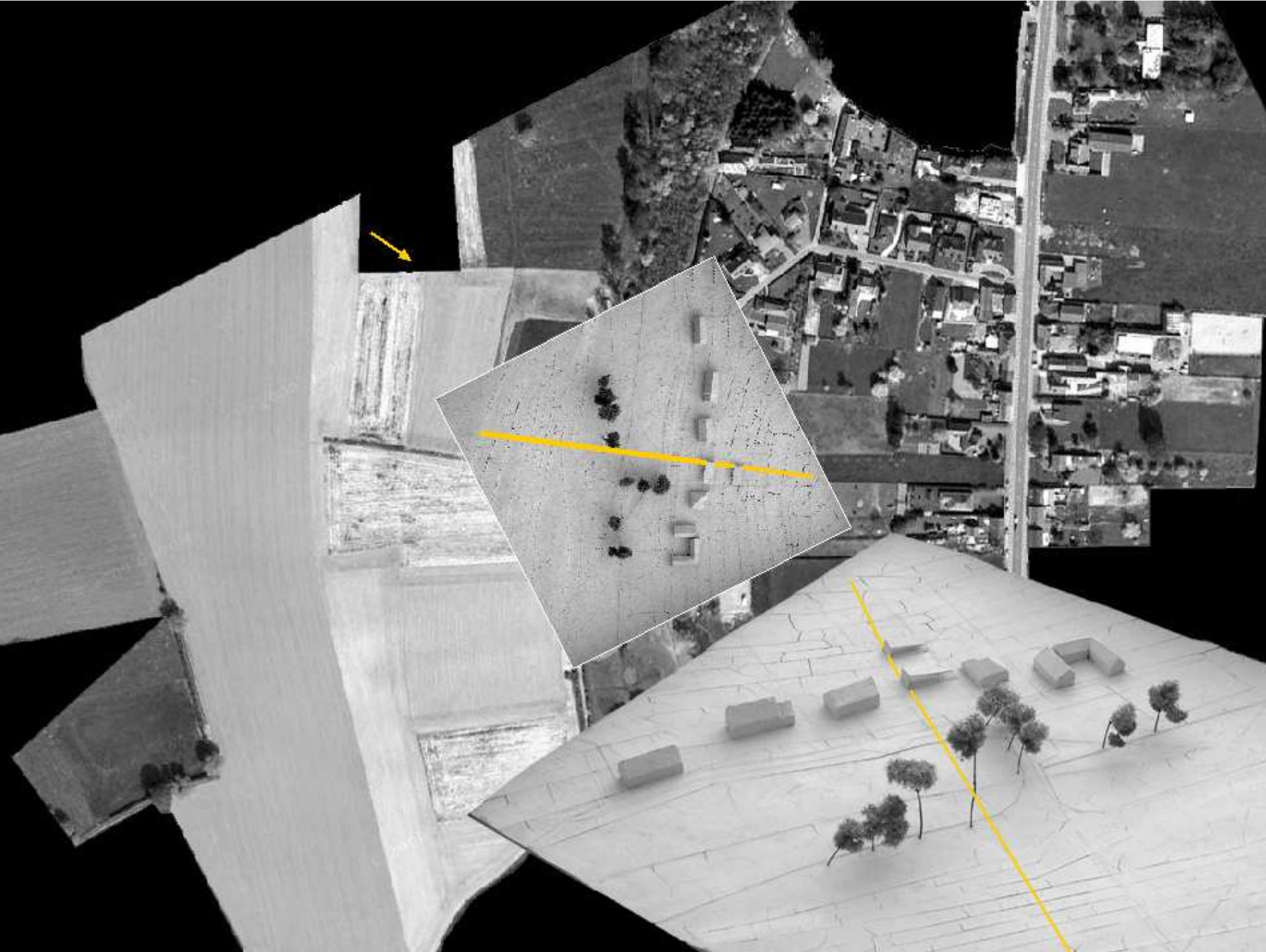




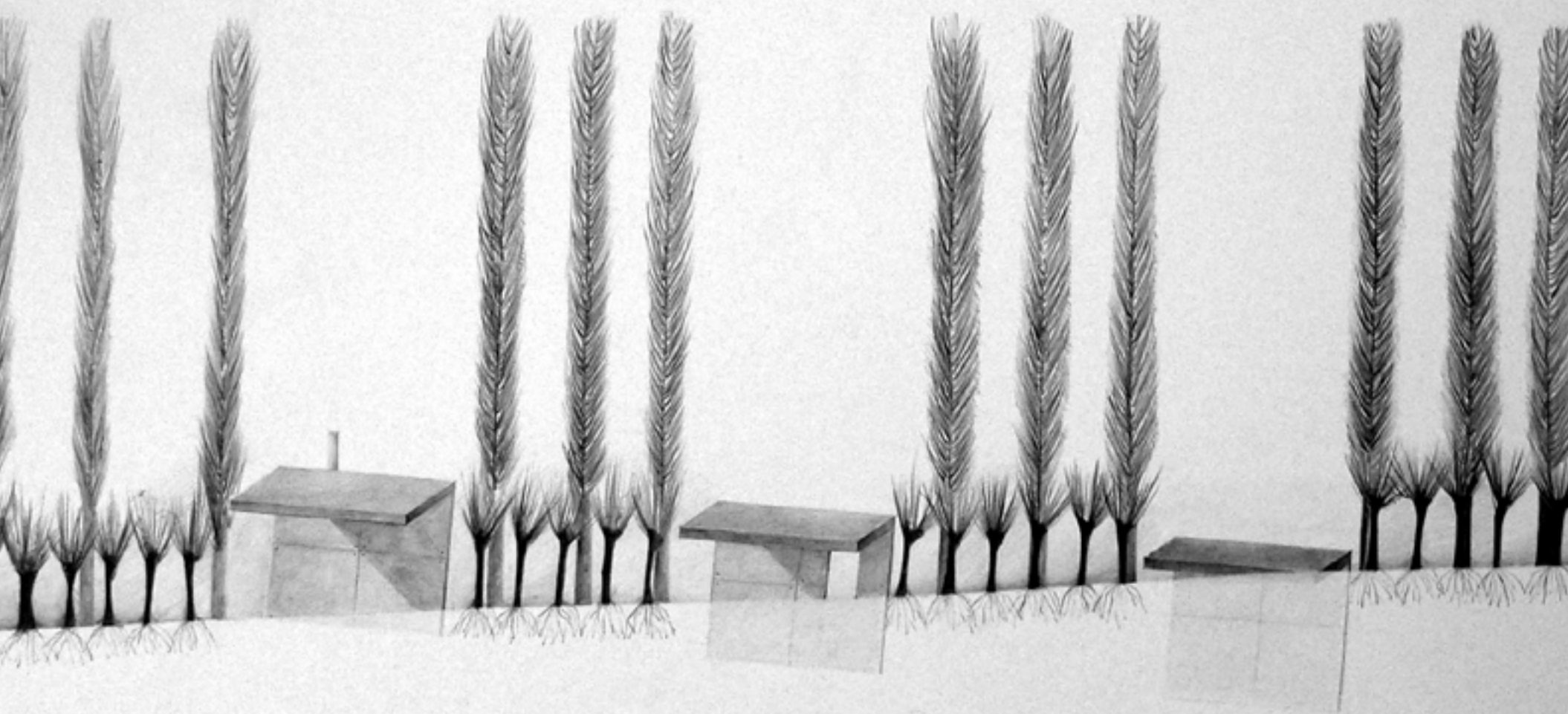




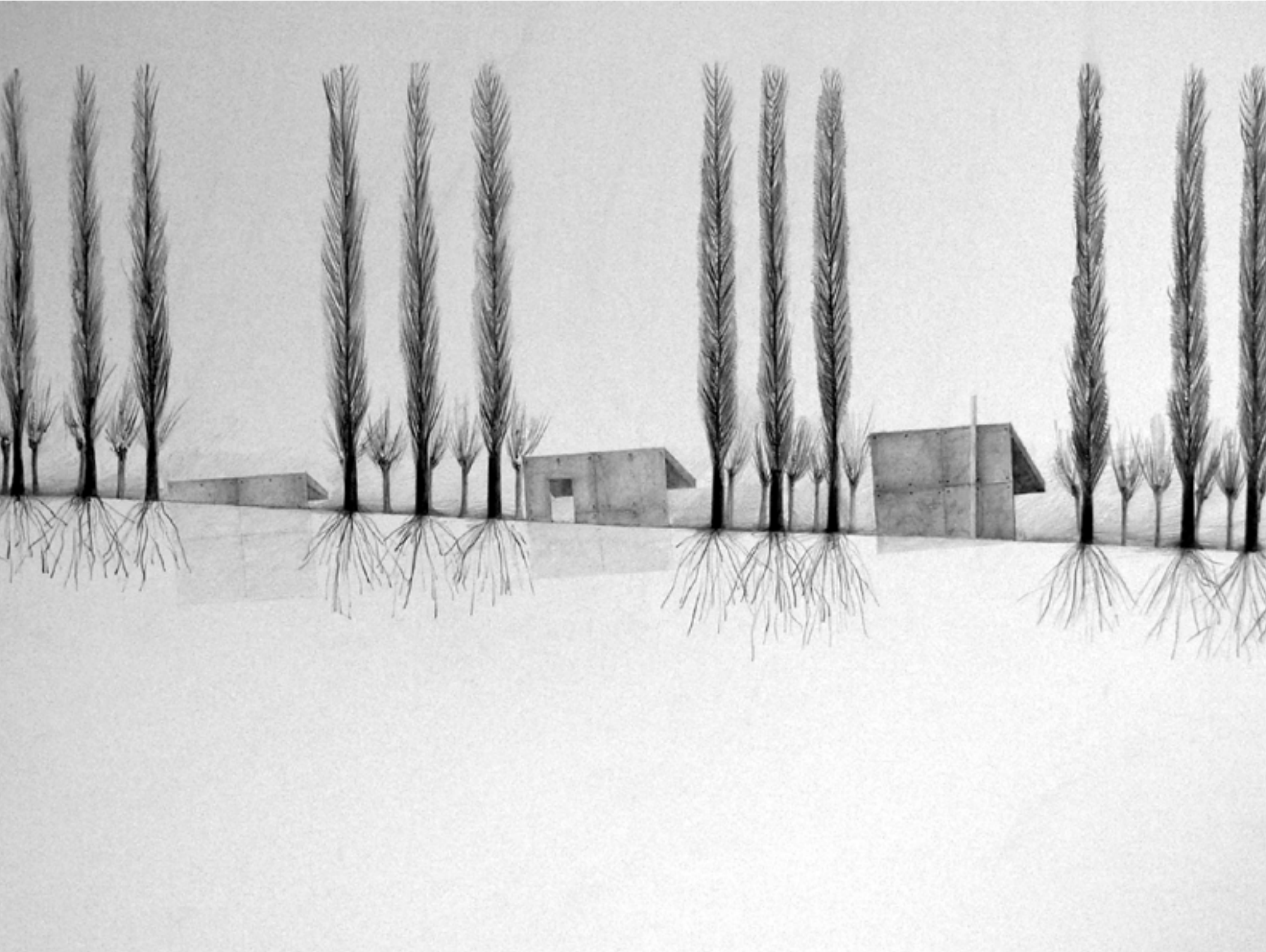


















DEVELOPING

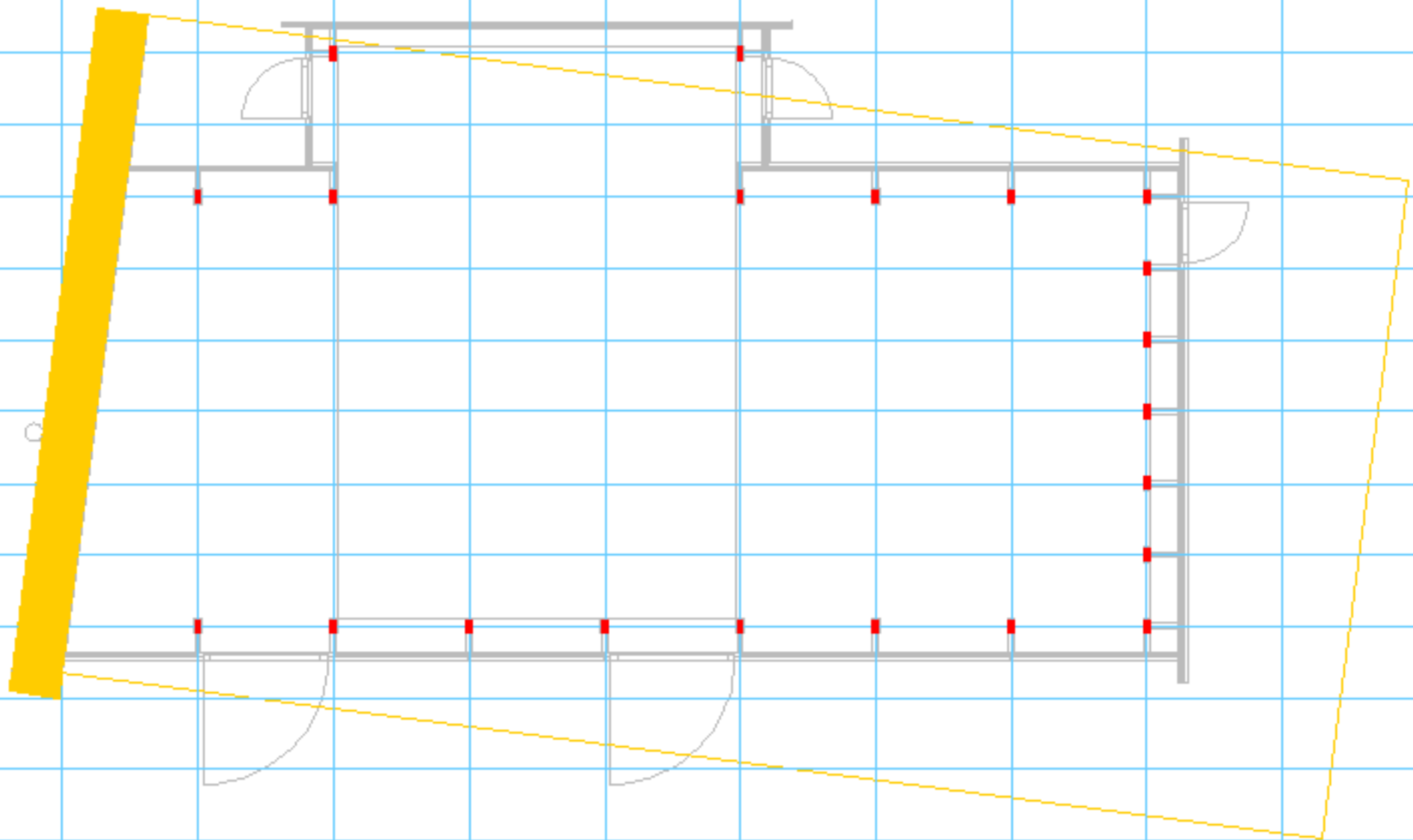
(DIS)APPEARING STRUCTURE OF THE FOLD: CONCRETE
(= PRIMARY STRUCTURE)

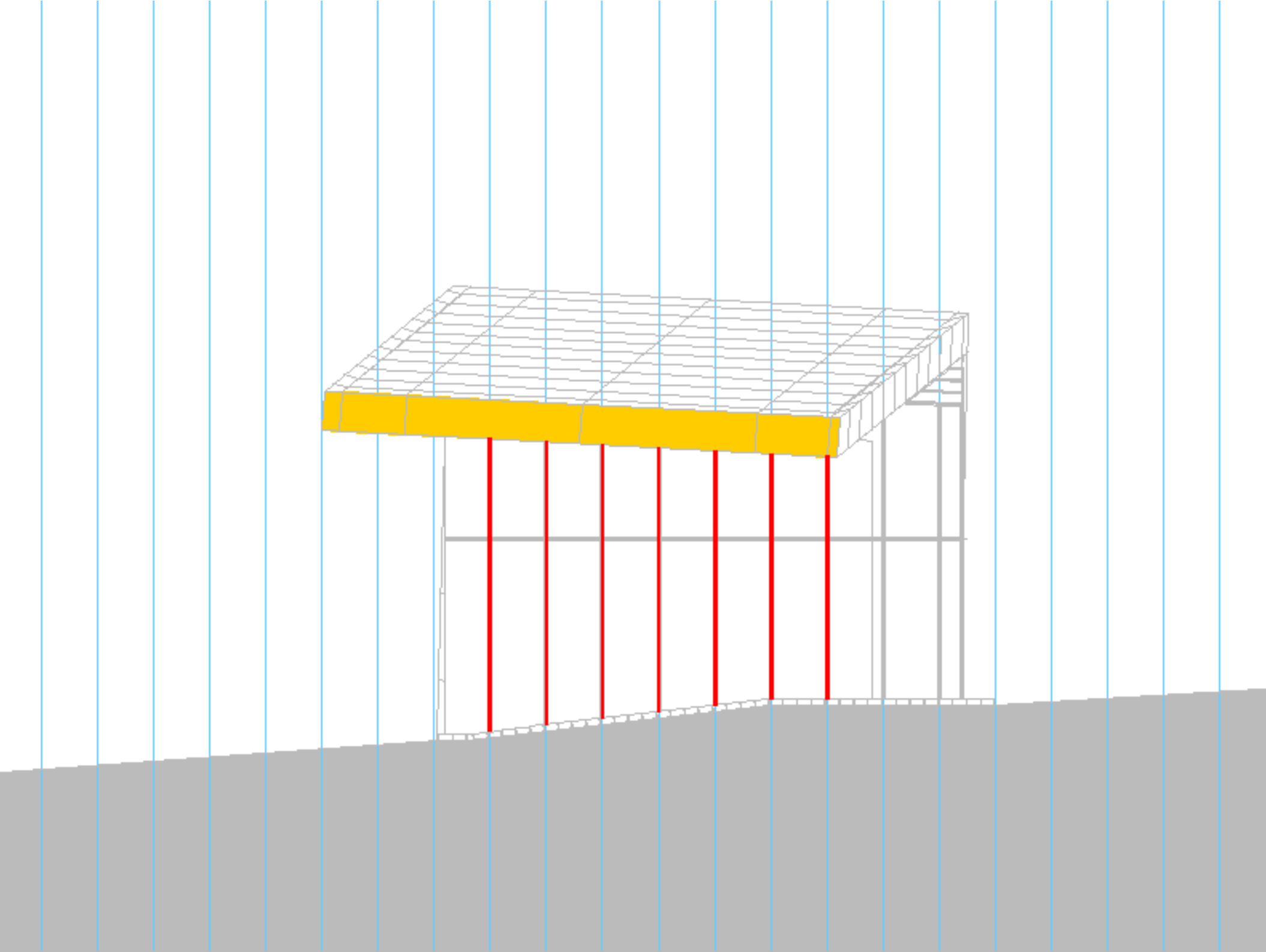
*The **Columns** are the transition between the Fold and the Void.
There is a specific Attitude of the Columns that hold the specific Attitude of the Fold.*

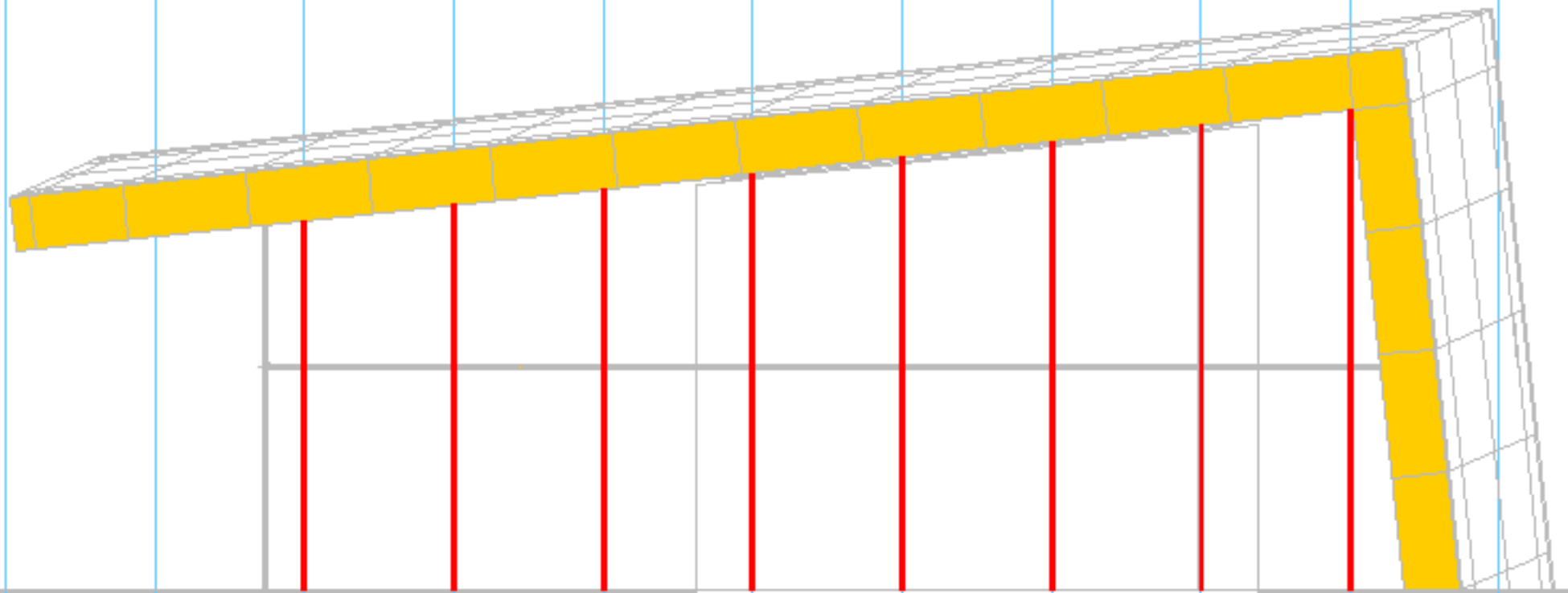
(DIS)APPEARING STRUCTURE OF THE VOID: GRID
(=SECONDARY STRUCTURE)

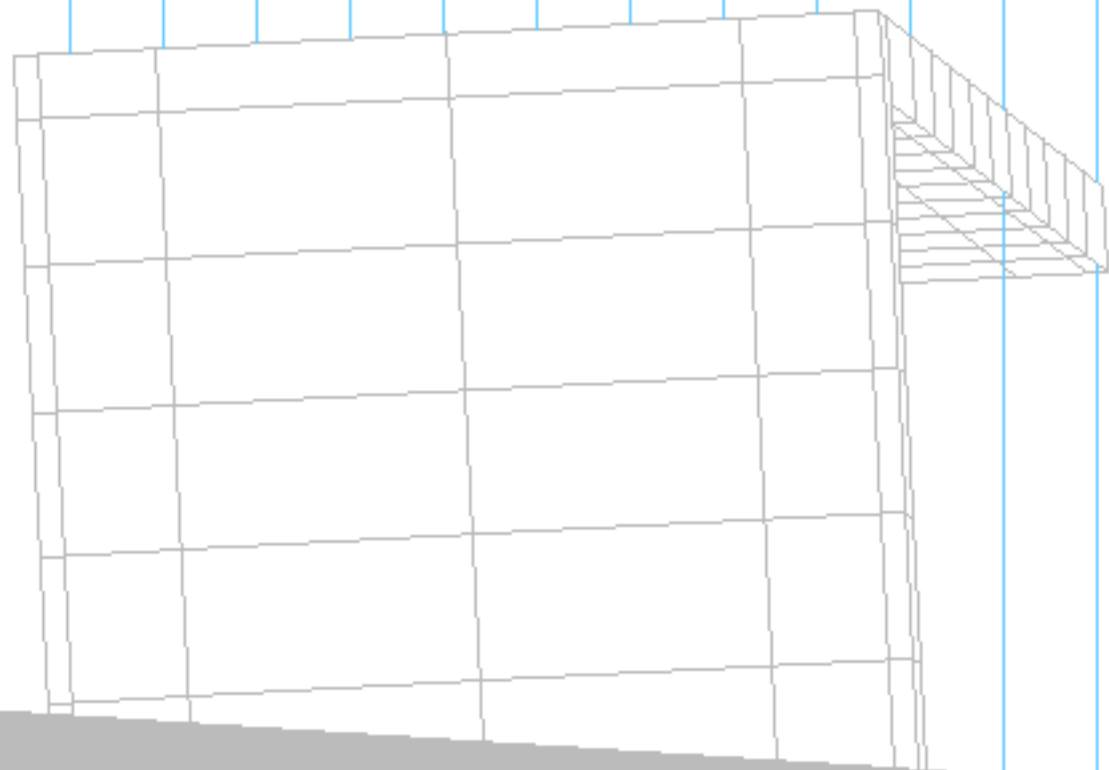


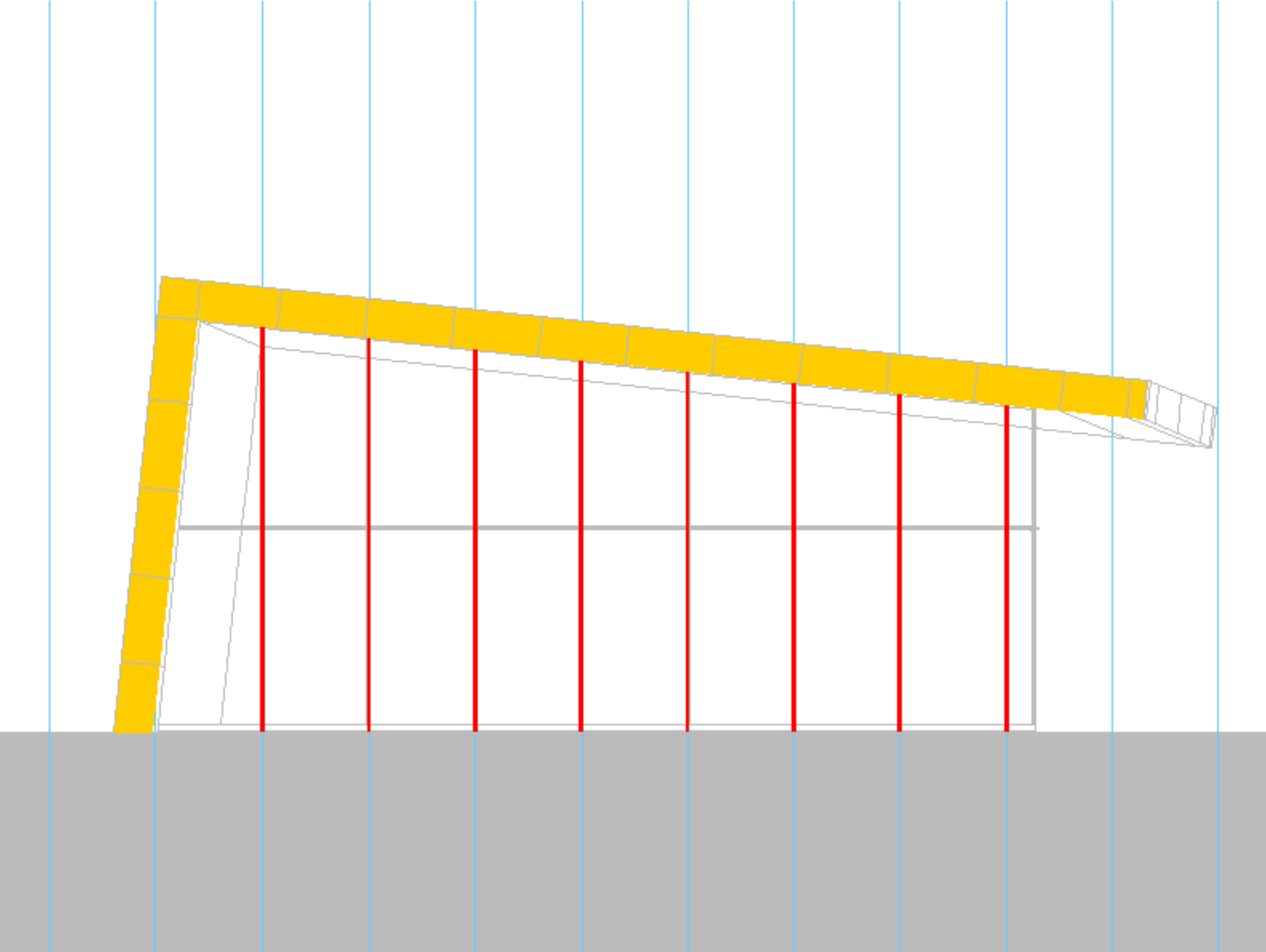


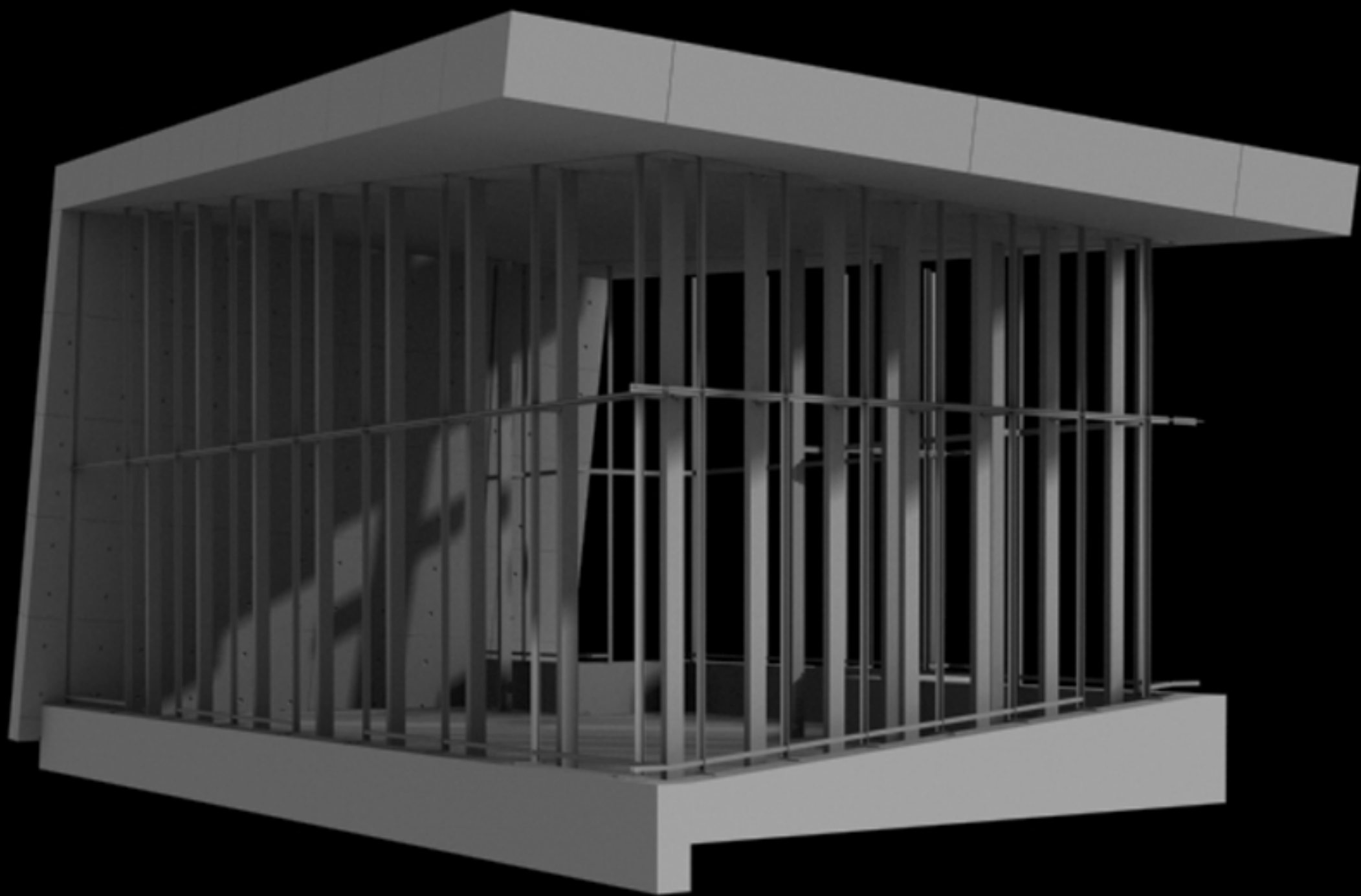














BUILDING

(DIS)APPEARING STRUCTURE OF THE FOLD: CONCRETE
(= PRIMARY STRUCTURE)

*The **COLUMNS** are the transition between the Fold and the Void.
There is a specific Attitude of the Columns that hold the specific Attitude of the Fold.*

(DIS)APPEARING STRUCTURE OF THE VOID: GRID
(=SECONDARY STRUCTURE)



















LIVING...(DIS)APPEARING...WELL-BEING

LIVING... IN (THE STRUCTURE OF) THE LANDSCAPE

LIVING... IN (THE ORIENTATION OF) THE LANDSCAPE

LIVING... IN (THE TOPOGRAPHY OF) THE LANDSCAPE

(DIS)APPEARING... UNDER (THE STRUCTURE OF) THE FOLD

(DIS)APPEARING... IN (THE STRUCTURE OF) THE VOID

WELL-BEING... IN THE WORLD











laa

<https://uclouvain.be/fr/instituts-recherche/lab/laa>

© Les Pages du laa
ISSN : 2593-2411